

| STANDARD PANEL TOLERANCES    |                 |
|------------------------------|-----------------|
| PANEL WIDTH                  | +0 -3MM         |
| PANEL LENGTH                 | ±6MM            |
| SQUARENESS                   | ±13MM           |
| TRANSVERSE CAMBER (WIDTH)    | .005 x WIDTH    |
| LONGITUDINAL CAMBER (LENGTH) | .003 x LENGTH   |
| SIDE BOW (SWEEP)             | ±6MM PER 3048MM |
| MAIN BAR VERTICALITY         | ±3MM            |
| CROSS BAR VERTICALITY        | ±2MM            |

| MATERIAL SPECIFICATIONS              |       |             |         |
|--------------------------------------|-------|-------------|---------|
| DESCRIPTION                          | ASTM  | ALLOY / GR. | REMARKS |
| BRG. BARS, SUPP'L BARS AND CROSSBARS | A 588 |             |         |
| TRIM PLATES                          | A 588 |             |         |

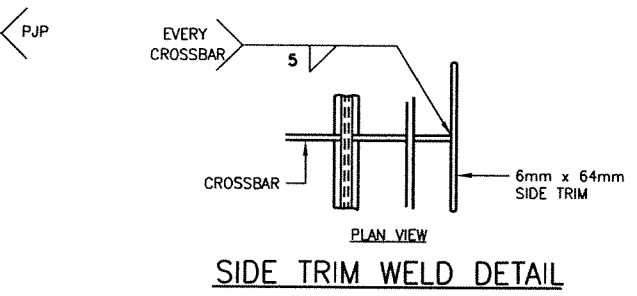
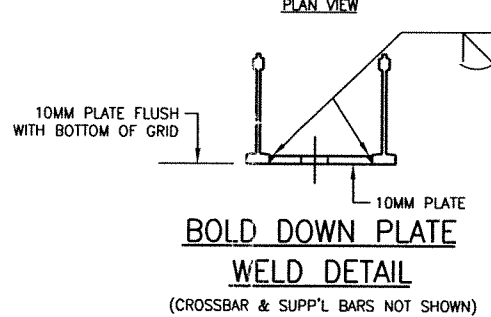
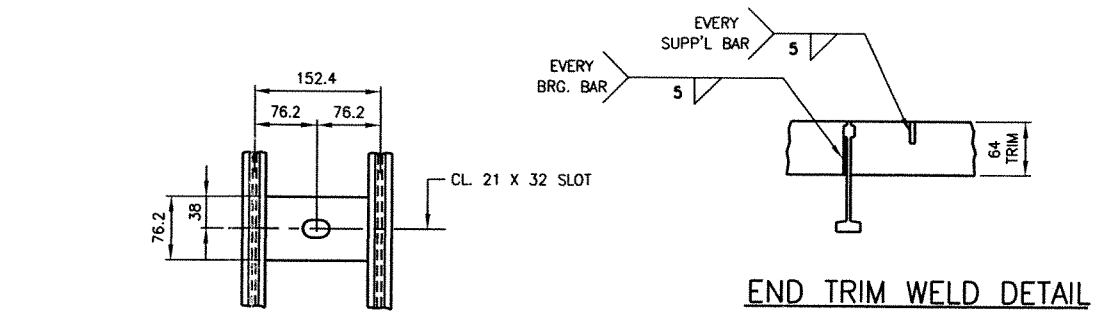
GENERAL NOTES:

MATERIAL AND WORKMANSHIP SHALL BE IN ACCORDANCE WITH MANUFACTURER'S STANDARDS.

SHOP WELDING SHALL BE PERFORMED BY THE GAS METAL ARC PROCESS (MIG) USING ER70S-3 FILLER METAL PER AWS D1.5 OF THE BRIDGE WELDING CODE.

PANELS TO BE SUPPLIED MILL FINISH.

PAY AREA: 446 SQ. METERS [4,803.97 SQ. FT.]

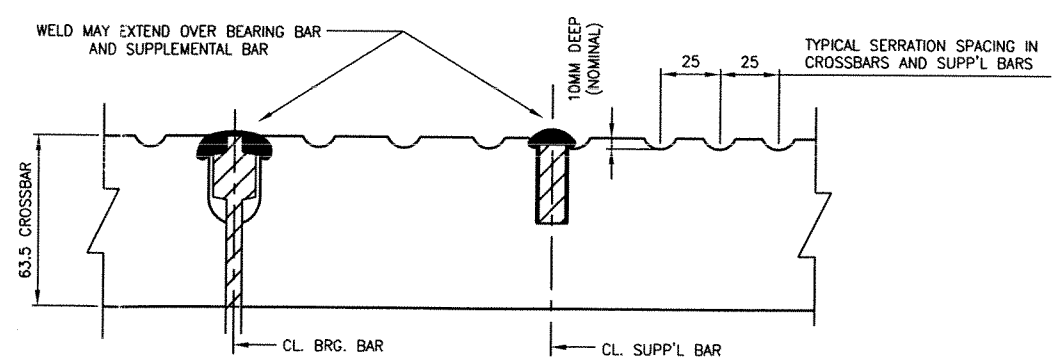
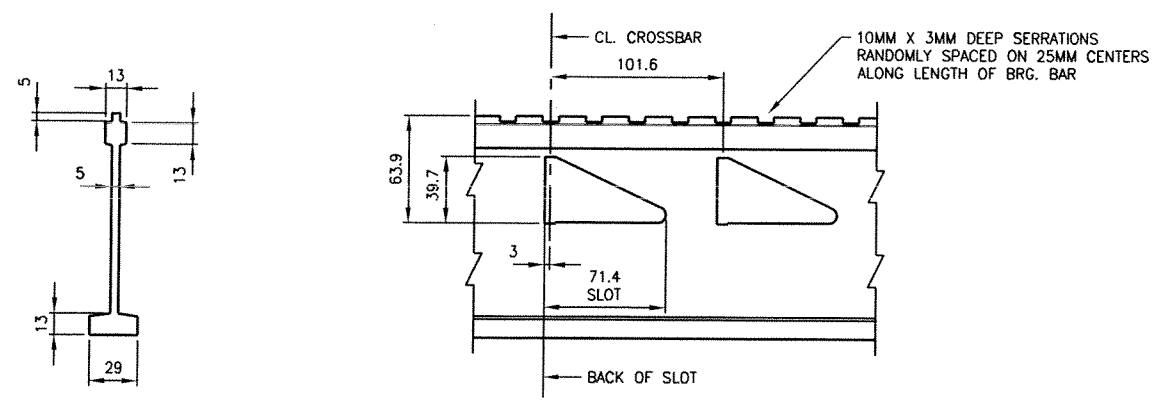
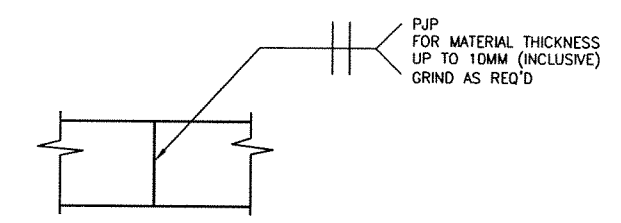
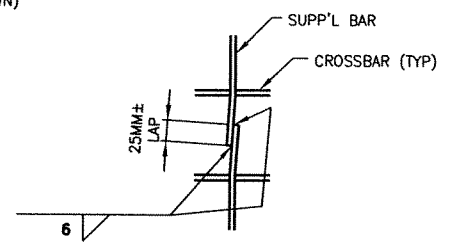
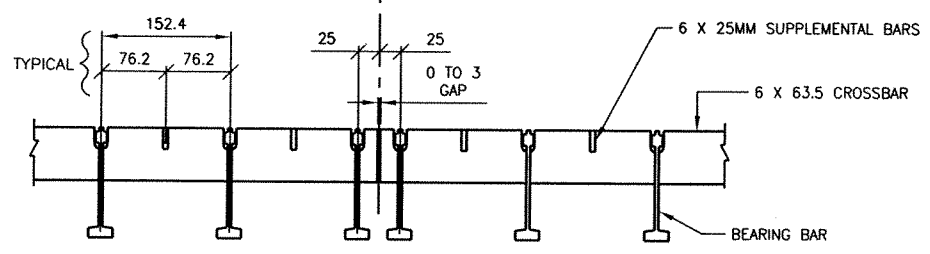


BRIDGE BUREAU  
STATE OF MONTANA  
DEPARTMENT OF TRANSPORTATION

APPROVED  APPROVED AS NOTED  
 RETURN FOR CORRECTION (CHECK CORRECTIONS AND RETURN \_\_\_ SETS OF REVISED PRINTS)

Approval indicates plans generally conform to material, detail and connection requirements of the contract. Contractor remains responsible for accuracy and that submittal conforms to all contract requirements. Contractor is responsible for fit of structure in the field.

By *[Signature]* Date 3/14/06



RECEIVED

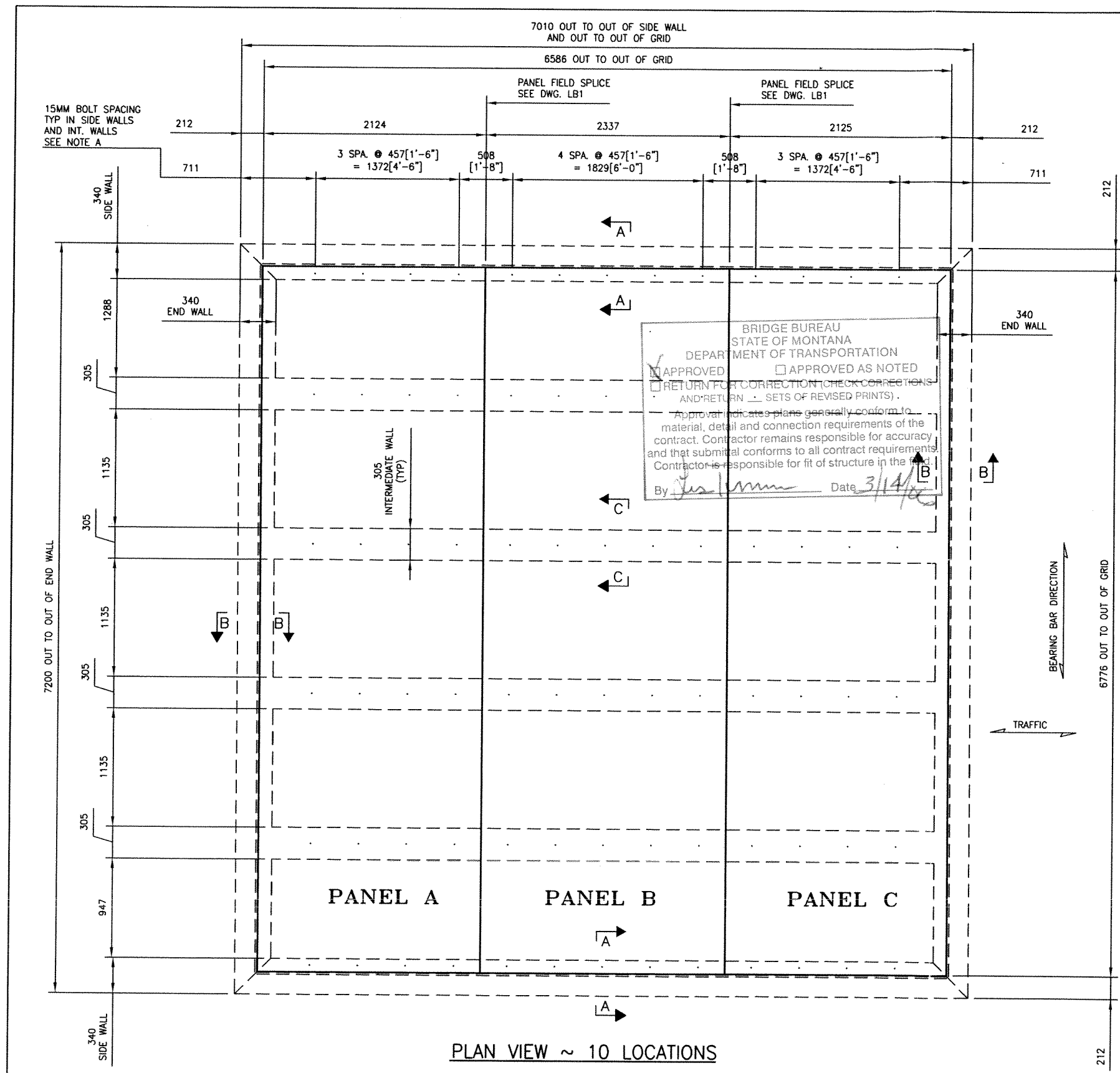
MAR 20 2006

FAB. PRODUCTS

|  |                |
|--|----------------|
| APPROVED:  | DATE:          |
| <b>L. B. FOSTER CO.</b><br>GENERAL OFFICES<br>PITTSBURGH, PENNSYLVANIA 15220 |                |
| FOR: RIVERSIDE CONTRACTING   |                |
| MONTANA DEPT. OF TRANSPORTATION  |                |
| WILDLIFE GUARDS  |                |
| 5" OPEN GRID DECK  |                |
| GENERAL NOTES AND TYPICAL DETAILS  |                |
| DATE: 2/24/06  | JOB NO: S00142 |
| CHECK: NC  | DATE: 2/06     |
| REV  | DESCRIPTION    |

|     |             |    |      |       |      |
|-----|-------------|----|------|-------|------|
| REV | DESCRIPTION | BY | DATE | CHK'D | DATE |
|     |             |    |      |       |      |

RIVERSIDE CONTRACTING, INC.  
 APPROVED BY: *Riverside*  
 DATE: 3-20-06 REF #

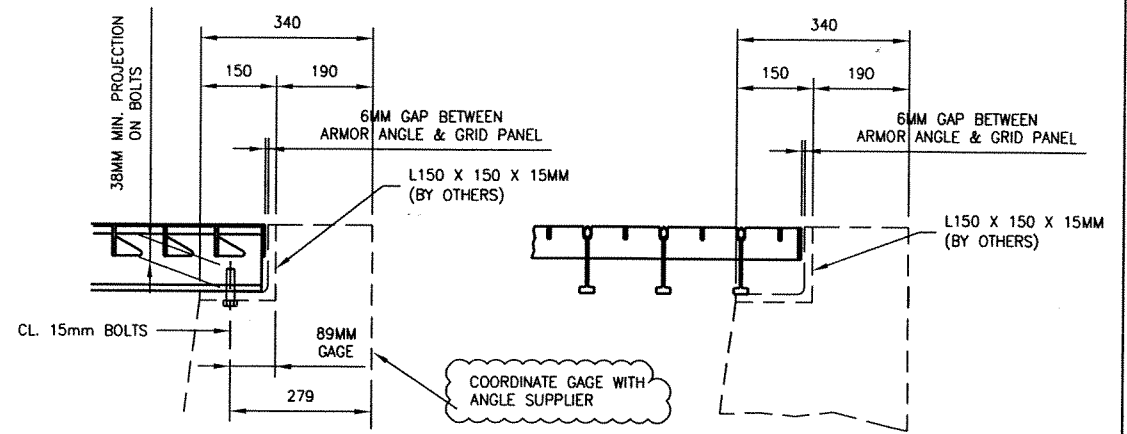


BRIDGE BUREAU  
 STATE OF MONTANA  
 DEPARTMENT OF TRANSPORTATION

APPROVED  APPROVED AS NOTED  
 RETURN FOR CORRECTION (CHECK CORRECTIONS AND RETURN 2 SETS OF REVISED PRINTS).

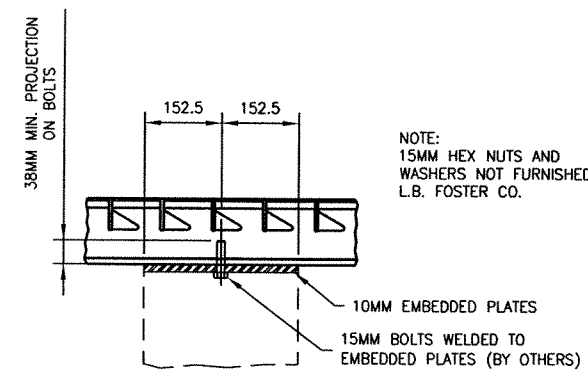
Approval indicates plans generally conform to material, detail and connection requirements of the contract. Contractor remains responsible for accuracy and that submittal conforms to all contract requirements. Contractor is responsible for fit of structure in the field.

By: *[Signature]* Date: 3/14/06



SECTION A-A  
THRU SIDEWALL

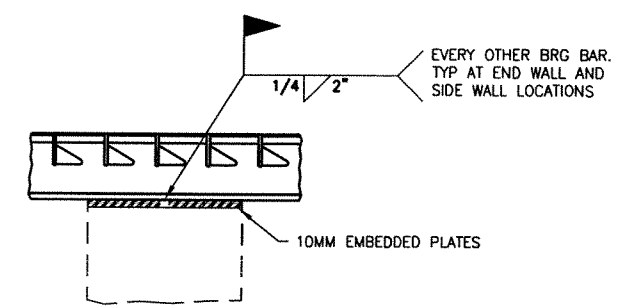
SECTION B-B  
THRU SIDEWALL



SECTION C-C  
(TYP THRU INTERMEDIATE WALLS)

NOTE:  
 15MM HEX NUTS AND WASHERS NOT FURNISHED BY L.B. FOSTER CO.

NOTE A:  
 FIXTURES FOR SHOP ASSEMBLING THE GRID PANELS ARE IN IMPERIAL UNITS THEREFORE SPACING FOR THE 15MM BOLTS SOWN IN BRACKETS [ ] MUST BE HELD.



SECTION C-C (ALTERNATE)

INTERMEDIATE WALLS SHOWN. CONDITION AT END AND SIDE WALL EMBEDDED ANGLES SIMILAR

RECEIVED  
 MAR 20 2006  
 FAB. PRODUCTS

|   |             |
|---|-------------|
| APPROVED:   | REV'D APPL. |
| <b>L. B. FOSTER CO.</b>                           |             |
| GENERAL OFFICES<br>PITTSBURGH, PENNSYLVANIA 15220 |             |
| FOR: RIVERSIDE CONTRACTING                        |             |
| MONTANA DEPT. OF TRANSPORTATION                   |             |
| WILDLIFE GUARDS                                   |             |
| 5" OPEN GRID DECK                                 |             |
| ERECTION PLAN AND DETAILS                         |             |
| MADE RLP DATE 2/24/06 JOB NO. SDO142              | CUST. NO.   |
| CHECK NC DATE 2/06                                | DRAWING LB2 |
| REV.  | DESCRIPTION |

|  |  |  |  |
|--|--|--|--|
|  |  |  |  |
|  |  |  |  |
|  |  |  |  |